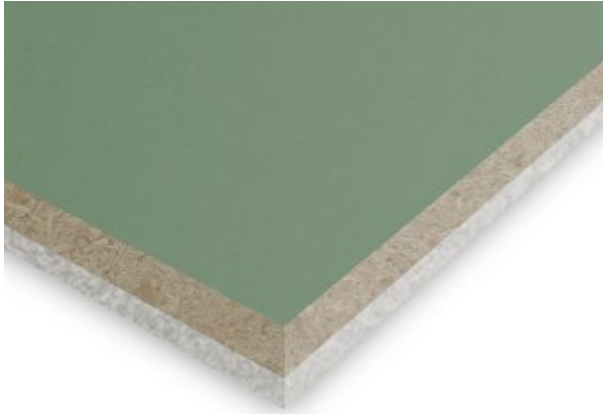


Noisedeck 28 System

Acoustic floating floor system 28mm

New Build | Conversions | Refurbishment | Domestic | Commercial | Part E

Noisedeck 28 Acoustic Floating Floor Description



- Interlocking floating floor system for use directly over timber joists or floorboards
- Noisedeck 28 comprises an 18mm V313 P5 moisture-resistant chipboard bonded to a 10mm layer of recycled PET mat.
- Installed as part of a complete sound reduction system, it enables a timber floor to meet the sound transmission regulations of Approved Document E 2003 and subsequent amendments in 2004, 2010, 2013, and 2015.

Product Data

Noisedeck 28: 2400mm x 600mm x 28mm

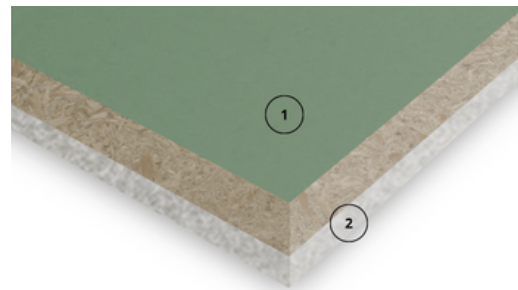
Resilient layer: 10mm

Interlocking layer: 18mm

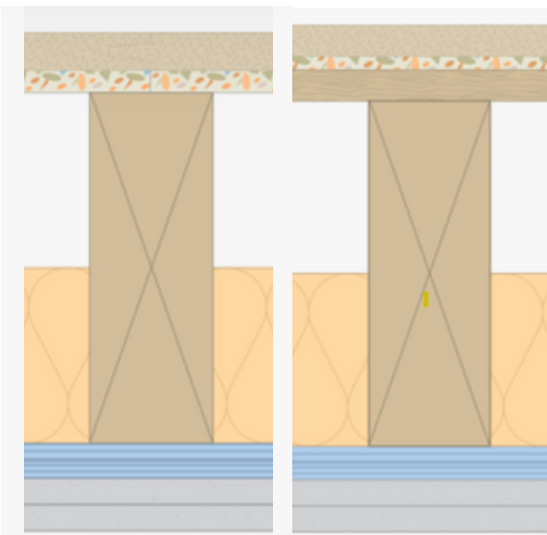
Weight: 20kg per sheet

Performance Direct to Joist:

- DnT,w+ Ctr 56dB (airborne higher the better)
- L'nT,w 55dB (impact lower the better)



- 1 18mm P5 V313 moisture resistant chipboard
- 2 10mm recycled PET mat



Installation

- The Noisedeck 28 system can be installed on an existing timber floor or directly on the joist. Install Noisedecks in a brick bond pattern.
- 100mm 60kg/m³ insulation between the joists.
- 20kg/m² of double-boarded 12.5mm acoustic plasterboard on soundbreaker bars at 400mm centres perpendicular to the joist direction.
- Isolation tape around the floor's perimeter reduces impact vibration leaks via structural walls and airborne sound paths.

Apply the Noisestop Isolation tape to the perimeter of the walls to isolate the flooring from the walls. Lay the Noisedecks in a broken bond pattern, and apply wood glue to the tongue and groove edge. Install skirting board over the isolation tape and trim off any excess.

Every effort has been taken in preparing this sheet to ensure the accuracy of the representations contained herein. Recommendations on using materials, construction details and installation methods are given in good faith and relate to typical situations. However, every site has different characteristics and reliance should not be placed upon the foregoing recommendations. Advice can be given to specific applications of the products, upon request.

The Noisedeck Range

- Noisedeck 18T: Overlay system 18mm
- Noisedeck 32: Overlay and direct to joist system 32mm