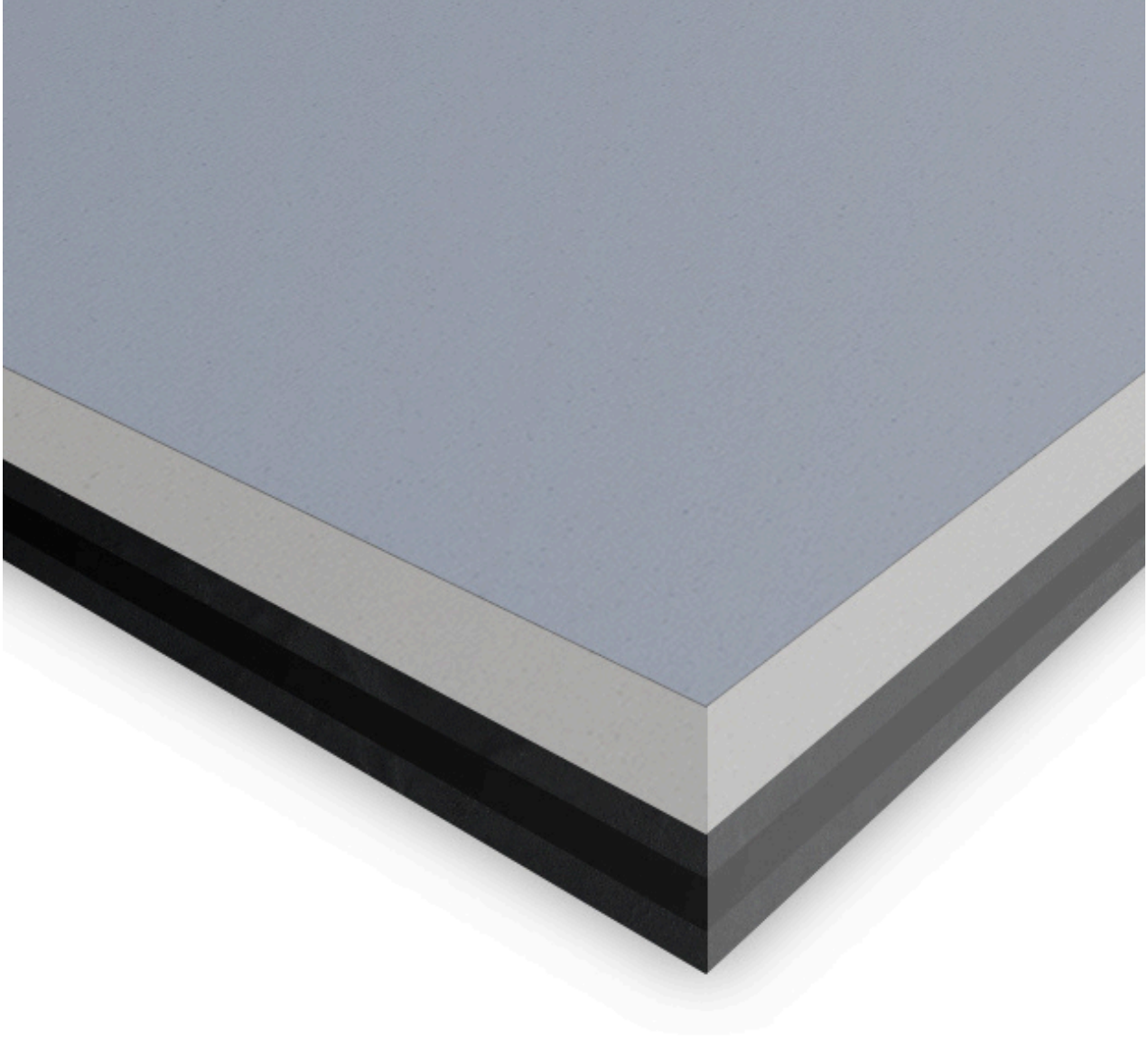


Silent Panel 30mm Fitting Guide



Silent Panel 30mm Fitting Guide

www.noisestopsystems.co.uk
info@noisestopsystems.co.uk
01423 339163

NOISE  **STOP**
SYSTEMS

Silent Panel 30mm Fitting Guide

Before you begin, please check the wall's surface and make sure it is in good condition.

Repairer cracks, holes or blown plaster before you fit your panels. Carrying out remedial work to the wall will ensure you maximise the sound insulation performance of the panels.

Remove skirting and coving and extend electrical outlets. If you plan to reinstate them, fit acoustic putty pads inside the outlet back boxes to ensure the wall's acoustic integrity.

If you are fitting acoustic insulation in the floor and ceiling cavities, we recommend you do this before you fit the soundproofing panels.

Attach panels to solid party walls with screws and plugs; we recommend using nine hammer fixings per board. Check the wall for the suitability of your fixings, as you may need an alternative fixing method depending on the wall's construction. If you are fitting the panels to a stud wall or onto metal furring channels, use drywall screws.

Cut the panels with either a hand saw, circular saw or a jigsaw.

The panels are fitted with the acoustic membrane on the back of the board against the wall; the plasterboard faces out into the room.

When fitting the first row of panels, we recommend leaving a 3-5mm gap from the floor to the bottom of the panel. A 3-5mm gap is also left where the panels meet the side walls and the ceiling. Fill the gap with acoustic sealant to ensure acoustic integrity.

Once the first row has been installed, we recommend staggering the joins between it and the second row of panels. You can use an off-cut from the first row to start the second row, ensuring the joins are staggered.

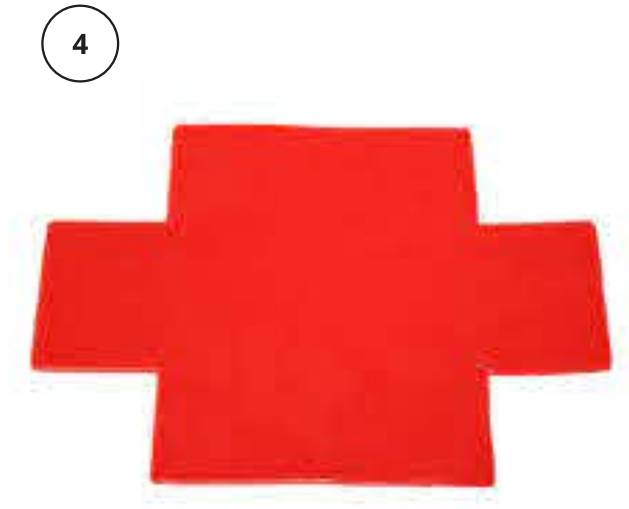
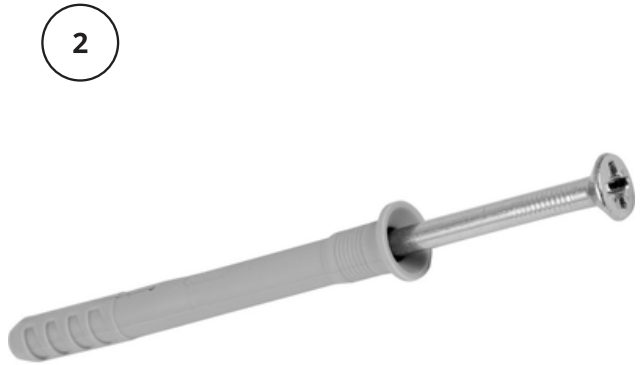
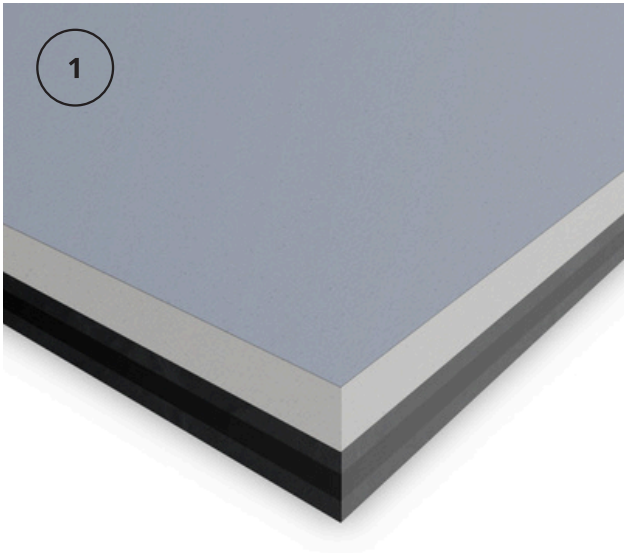
Soundproof panels can be finished in several ways, either with a plaster skim or by taping and filling the tapered edges. You can paint or apply lining paper directly onto the panels.

It is possible to hang pictures, mirrors and shelving on the finished wall.

Silent Panel 30mm Fitting Guide

Materials Required

- 1.Noisestop Silent Panel 30mm
- 2.Hammer Fixings
- 3.Acoustic Sealant
- 4.Acoustic Putty Pads



www.noisestopsystems.co.uk
info@noisestopsystems.co.uk
01423 339163

NOISE STOP
SYSTEMS