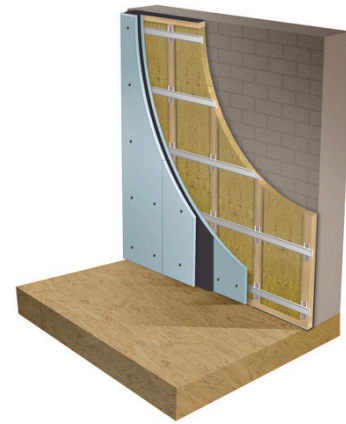
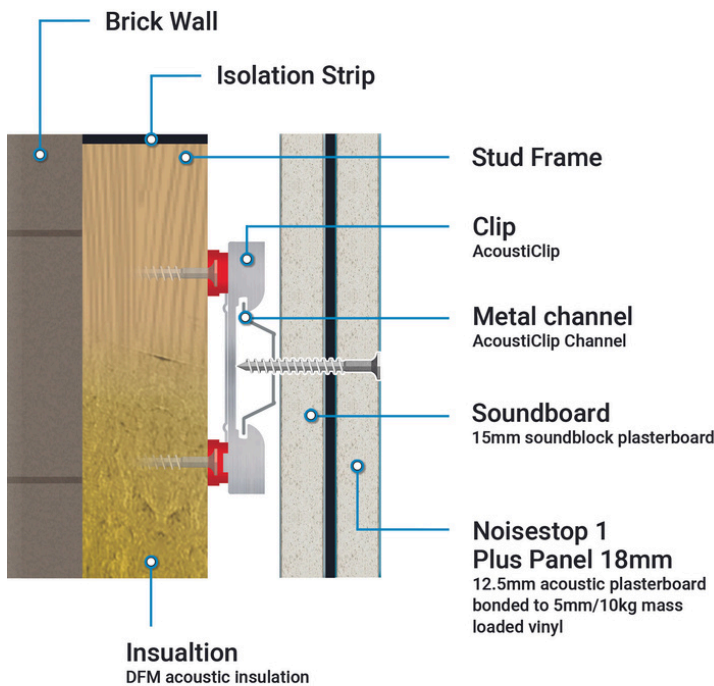


Sound Insulation Test

AcoustiClip Solid Wall Stud System



Mass air resonant frequency = 24Hz
 Panel size = 2.7m x 4.0m
 Partition surface area mass = 250kg/m²

System Description

- The system is applied to a 100mm single-skin brick wall
- 50mm/60kg Acoustic insulation slabs between the stud frame
- AcoustiClip and AcoustiChannel onto the stud frame
- 15mm Acoustic plasterboard
- 18mm Noisestop 1Plus Panel (incorporated 12.5 acoustic p/b and 10kg mass-loaded vinyl)
- Acoustic sealant to the edges and perimeter of the boards

Sound Insulation

Untreated 100mm single skin brick wall	DnT,w 38dB
AcoustiClip Solid Wall Stud System applied	DnT,w 69dB
Improvement when solution is applied	DnT,w 31dB

freq.(Hz)	R(dB)	R(dB)
50	46	
63	52	49
80	57	
100	61	
125	64	63
160	65	
200	57	
250	53	54
315	55	
400	58	60
500	60	
630	63	
800	65	
1000	68	67
1250	70	
1600	72	
2000	74	73
2500	74	
3150	75	
4000	97	80
5000	100	

