

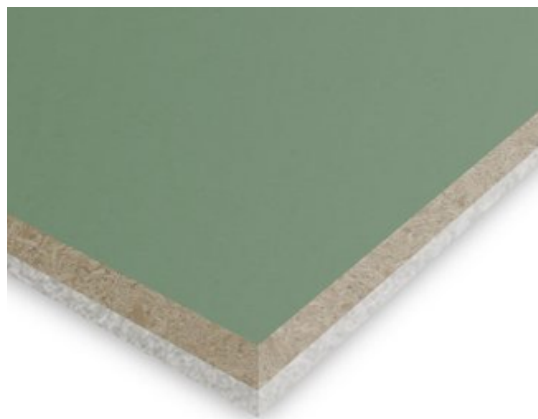
# Noisedeck 32 System

Acoustic direct to joist system 32mm



New Build | Conversions | Refurbishment | Domestic | Commercial | Part E

## Noisedeck 32 Acoustic Floating Floor



## Description

- Direct to the joist or an overlay system for new builds, conversions, refurbishments and listed buildings.
- Noisedeck 32 comprises a 22mm V313 P5 moisture-resistant interlocking chipboard bonded to a 10mm layer of recycled PET mat.
- Installed as part of a complete sound reduction system, it enables a timber floor to meet the sound transmission regulations of Approved Document E 2003 and subsequent amendments in 2004, 2010, 2013, and 2015.

## Product Data

**Noisedeck 32:** 2400mm x 600mm x 32mm

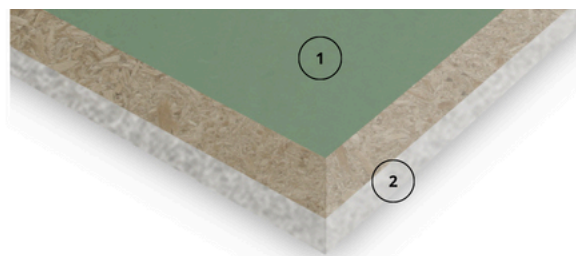
**Resilient layer:** 10mm

**Interlocking layer:** 22mm

**Weight:** 23kg per sheet

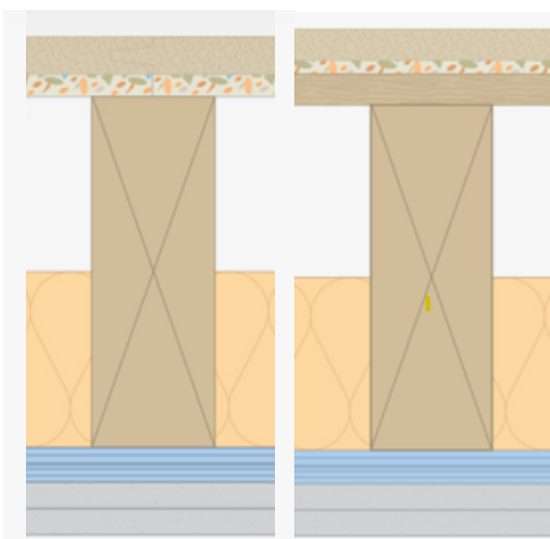
**Performance Direct to Joist:**

- DnT,w+ Ctr 56dB (airborne higher the better)
- L'nT,w 53dB (impact lower the better)



1 22mm P5 V313 moisture resistant chipboard

2 10mm recycled PET mat



## Installation

- Noisedeck 32 system on 200mm x 70mm timber joists @ 450mm centres. Alternatively, overlay on the existing sub-floor in a brick bond pattern.
- 100mm 60kg/m<sup>3</sup> insulation between joists.
- 20kg/m<sup>2</sup> of double-boarded 12.5mm acoustic plasterboard on resilient bars at 400mm centres perpendicular to the joist direction.
- Isolation tape around the room's perimeter reduces impact vibration leaks via structural walls and airborne sound paths.

Apply the Noisestop Isolation tape to the perimeter of the walls to isolate the flooring from the walls. Lay the Noisedecks in a broken bond pattern, and apply wood glue to the tongue and groove edge. Install skirting board over the isolation tape and trim off any excess.

## The Noisedeck Range

- Noisedeck 18T: Overlay system 18mm
- Noisedeck 28: Overlay and direct to joist system 28mm

Every effort has been taken in preparing this sheet to ensure the accuracy of the representations contained herein. Recommendations on using materials, construction details and installation methods are given in good faith and relate to typical situations. However, every site has different characteristics and reliance should not be placed upon the foregoing recommendations. Advice can be given to specific applications of the products, upon request.